



Gujarat (2001 Gujarat Recovery Reconnaissance Team)

WHY SHOULD I JOIN EERI?

EERI membership is uniquely multidisciplinary. Our members from around the world include researchers and practitioners, engineers, geoscientists, architects, planners, public officials, educators, and social scientists.

EERI actively involves its membership. Members work together on volunteer committees to initiate and implement many unique EERI projects such as the World Housing Encyclopedia, which is a joint project with IAEE and has several activities focused on developing countries, including the Confined Masonry Network, the WHE-PAGER project, and numerous construction materials tutorials.

WHAT IS AN EERI E-AFFILIATE MEMBERSHIP?

While over 20 percent of EERI's memberships are from outside the United States, EERI would like to increase this percentage, particularly with colleagues in developing countries. EERI has developed the new option of e-affiliate membership. It is an electronic membership that will be available to new members in developing countries only.

WHO QUALIFIES FOR E-AFFILIATE MEMBERSHIP?

E-Affiliate membership will be available only to new members in developing countries. A list of the qualifying countries can be found on our website at

<http://www.eeri.org/site/membership/join>

Access your membership electronically through the EERI Homepage using the Members Log-In link.

The Earthquake Engineering Research Institute (EERI) is a U.S.-based multidisciplinary professional association for earthquake professionals, engineers, earth scientists, architects, planners, social scientists and policy makers.

EERI is a leader in earthquake investigations and dissemination of earthquake risk reduction information, both in the US and globally in cooperation with its international partners, such as the International Association for Earthquake Engineering (IAEE) and other countryspecific associations.

The nonprofit organization offers many opportunities for earthquake professionals to stay current in the field through a monthly newsletter, quarterly journal, technical seminars, many of which are available online, and web reports.



Gujarat (2001 Gujarat Recovery Reconnaissance Team)

Earthquake Engineering Research Institute (EERI)

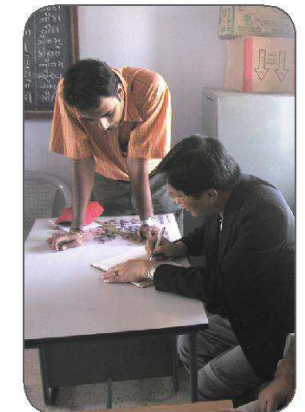
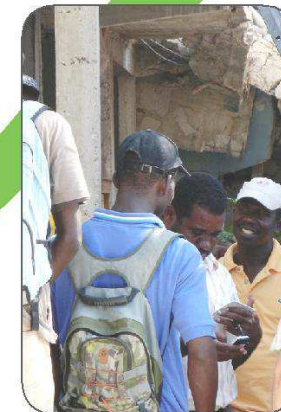
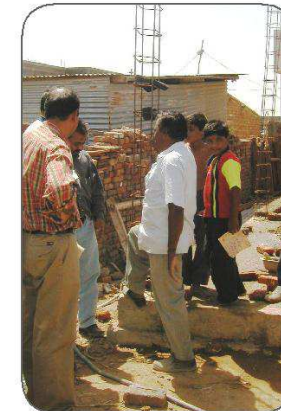
499 14th Street Suite 320
Oakland, CA 94612-1934
Phone: (510) 451-0905
Fax: (510) 451-5411

For more information, visit the website at

<http://www.eeri.org/>



JOIN EERI AS AN E-AFFILIATE MEMBER!



2018 APPLICATION FOR EERI E-AFFILIATE MEMBERSHIP

THIS OPTION OF INTERNATIONAL MEMBERSHIP IS FOR NEW EERI MEMBERS IN IDENTIFIED DEVELOPING COUNTRIES ONLY. As an E-Affiliate member of the Institute, you will receive electronic access to the monthly Newsletter, selected articles from the quarterly journal *Earthquake Spectra*, a free subscription to the hard copy of the quarterly periodical *Earthquake Engineering Practice*, and inclusion in the annual Membership Roster. You will also receive an electronic membership certificate and an electronic list of EERI members. Membership dues are \$25.00 for the year 2018.

Name: _____

First , Last

Title: _____

Professional Affiliation: _____

Professional Address: _____

City State Zip Country

Professional Phone: _____ FAX: _____

Country Code/City Code (where applicable)/Area Code

E-mail Address: _____

Home Address: _____

City State Zip Country

Home Phone: _____

Country Code/City Code(where applicable)/Area Code

Items you do not want printed in the Roster: _____

Where do you want EERI mail sent: Home Business

Payment must be made in US dollars drawn on a US bank or by credit card

Check/money order enclosed (\$25.00) Visa MasterCard \$25.00

OPTIONAL: Hard Copy of the EERI Membership Roster (\$10.00). _____

TOTAL ENCLOSED _____

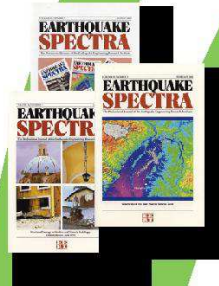
Card Number Exp. Date

Name on Card (Please Print) Authorized Signature Date

**This type of membership does not enjoy voting privileges.*

The Benefits of an EERI E-Affiliate Membership

- Reduced rates for **all** U.S. national and special conferences, meetings and technical seminars.
- Member rates for **all** EERI publications.
- A certificate of EERI membership sent to you.



- Electronic access to up to two papers per issue of the prestigious quarterly peer-reviewed journal **Earthquake Spectra**

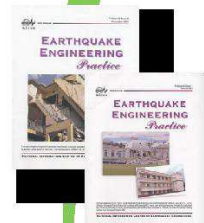
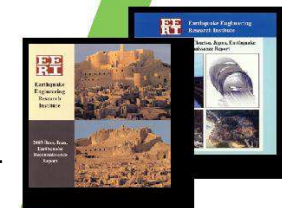


- Complete online access to the monthly EERI Newsletter, filled with timely information on recent earthquakes, new publications, conferences, and news.



- Listing in the EERI Membership Roster/Directory
- A pdf file with an abridged directory of EERI members

- Electronic access to all EERI earthquake reconnaissance reports.



- A subscription to **Earthquake Engineering Practice**, a quarterly periodical of previously published articles of of wide interest from NICEE, India.

- Access to e-workshops on topics of interest to developing countries

**This type of membership does not include voting privileges.*

Cover photos: Top Right & Bottom Left—Haiti (Miles); Top Left & Bottom Right—Gujarat (2001 Gujarat Recovery Reconnaissance Team)